



Draft! This walk is under construction.

Cocking to South Harting walk

to do

Length 14.5km (9 miles)

OS Maps OS Landranger 197; Explorer OL8 (was 120); Petersfield extension OL33 (was 133)

Toughness 3 out of 10.

Walk Notes A linear walk

This walk is recommended only for those who are (or are accompanied by someone) reasonably proficient at map reading.

This is the fifth walk of a series of 5 walks from east to west Sussex. The others are:

- 431. Robertsbridge to Uckfield
- 432. Uckfield to Pease Pottage
- 433. Pease Pottage to Steyning
- 434. Steyning to Cocking

Walk Options **Extending the walk to Petersfield**

Increases the length of the walk by 7.4km to 21.9km

Ending at Elsted after nn.nkm

One mid - late afternoon [91 bus](#) from The Three Horseshoes PH (no Sunday service) to Petersfield station (~25 mins), calls at South Harting 7 mins later.

Transport Trains go from London Victoria to Chichester, journey time 1 hour 30 minutes. On arrival at Chichester station catch the [60 bus](#) from South Street (Stop D) to Cocking, The Blue Bell PH, Cocking (30 mins). Exit station entrance at Chichester station, turn left to cross a level crossing to

continue along Southgate, dir 30°. After 180m where the main road veers right, continue ahead along South Street to reach Bus Stop D after 200m

Suggested Train: Take the train nearest to 9.00am.

Return from South Harting via taxi or (infrequent) [54 bus](#) from The White Hart PH (no Sunday service) to Petersfield station for trains back to London. Additionally there is one mid - late afternoon [91 bus](#) from The White Hart PH (no Sunday service) to Petersfield station (~20 mins).

Lunch and Tea

[The Three Horseshoes](#), Elsted, Midhurst GU29 0JY [01730 825746](#) Located nn.n km from the start of the walk.

[La Follia](#), 2 Newts Folly, The Square, South Harting, West Sussex, GU31 5PX [01730 923831](#). Located at the end of the walk.

[The White Hart](#), The Street, South Harting GU31 5QB [01730 825124](#). Located at the end of the walk.

Pubs in Petersfield

For the route through Petersfield, you pass by the following pubs:

- [The Red Lion](#), 3 College Street, Petersfield GU31 4AE [01730 235160](#).
- [The Townhouse](#), 28 High St, Petersfield GU32 3JL [01730 265630](#).
- [The Square Brewery](#), The Square, Petersfield GU32 3HJ [01730 264291](#).
- [The Old Drum](#), 16 Chapel St, Petersfield GU32 3DP [01730 300208](#).

Help Us!

After the walk, please leave a [comment](#), it really helps. Thanks!

You can also upload photos to the [SWC Group on Flickr](#) (upload your photos) and [videos to Youtube](#). This walk's tags are:

By Car

Start Hillbarn Lane, Cocking, West Sussex

Finish South Harting, West Sussex

Help

National Rail: 03457 48 49 50 • Traveline (bus times): 0871 200 22 33 (12p/min) • TFL (London) : 0343 222 1234

Version

Aug-24 [DAC](#)

Copyright

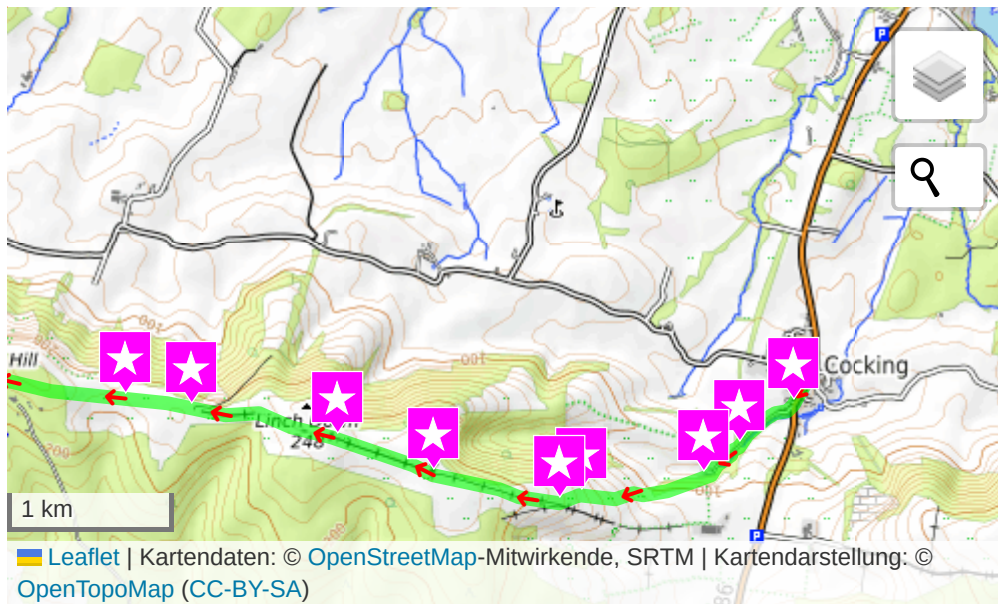
© [Saturday Walkers Club](#). All Rights Reserved. No commercial use. No copying. No derivatives. Free with attribution for one time non-commercial use only. www.walkingclub.org.uk/site/license.shtml

Walk Directions

OpenStreetMap (not OS) mapping is used in the PDF for licence reasons.

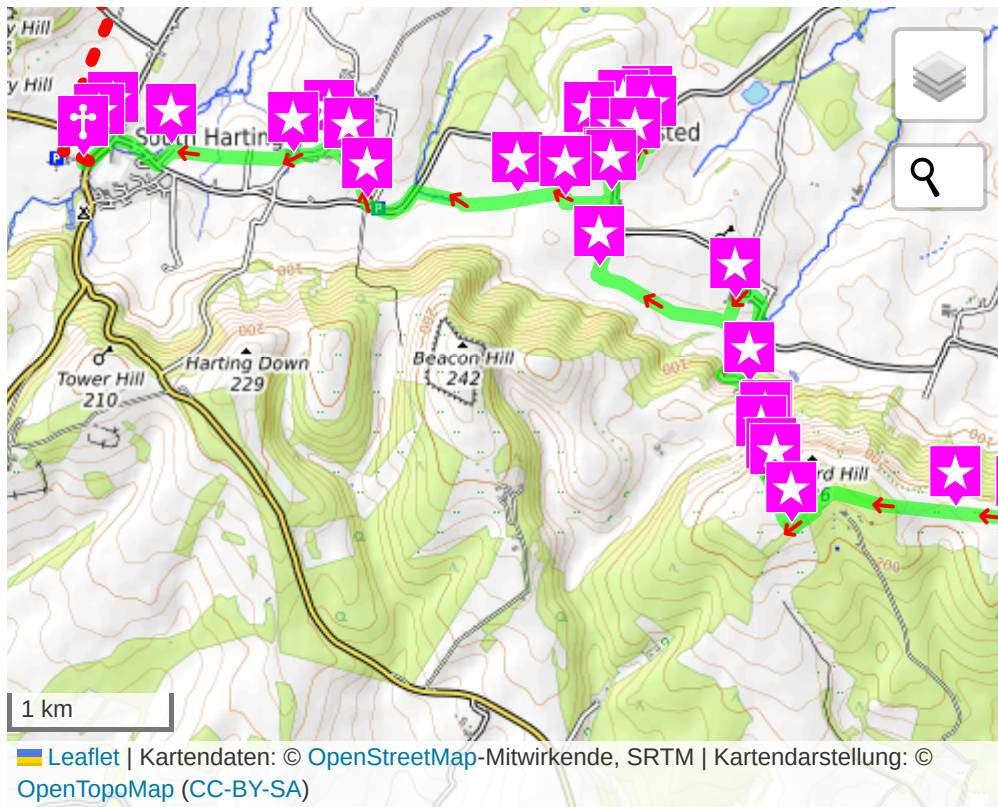
- **[1]** *Text for one, 300°*

Map 1

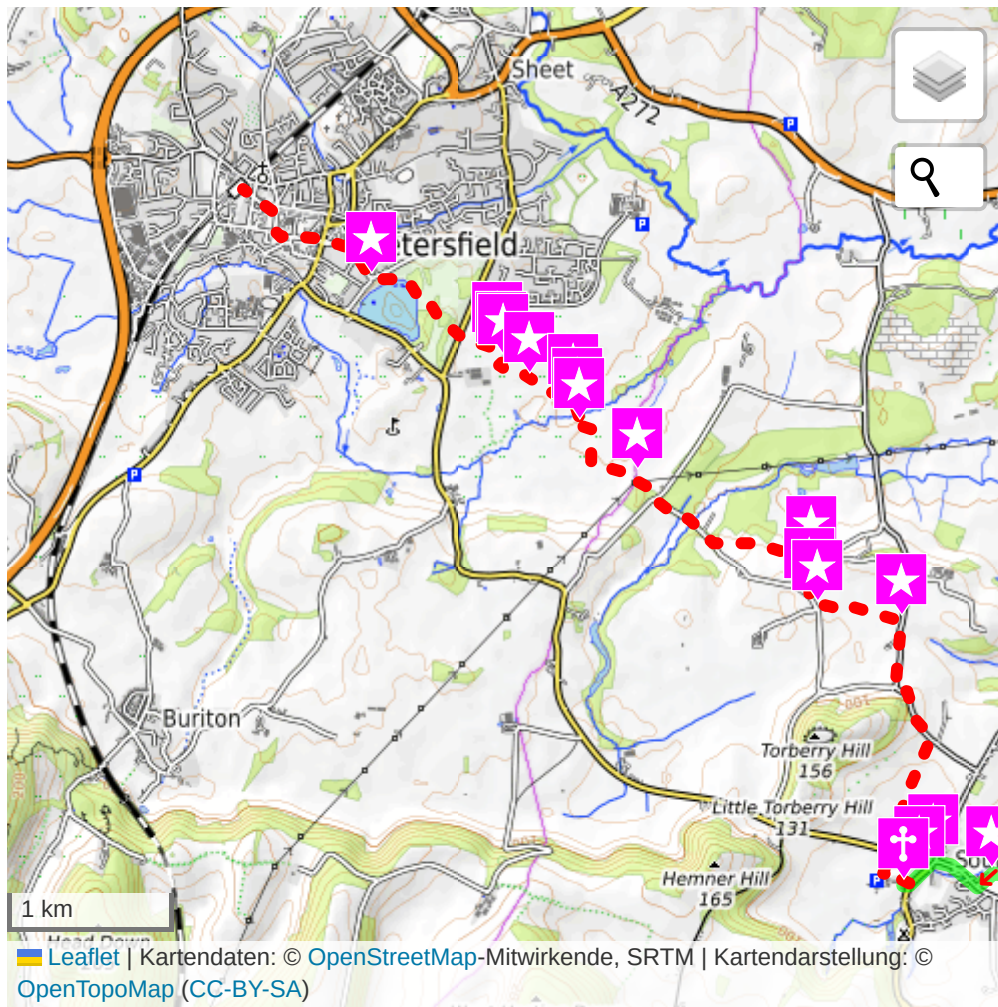


- **[2]** Text for two.
- **[3]** Text for three.

Map 2



Map 3



© Saturday Walkers Club. All Rights Reserved. No commercial use. No copying. No derivatives. Free with attribution for one time non-commercial use only.
www.walkingclub.org.uk/site/license.shtml

saturdaywalkers@walkingclub.org.uk

No warranty, use at your own risk!

Saturday Walkers Club © 2024